

Order Form and Price List

Account Information

Date _____ Account Number _____

Bill To _____

Phone Number _____ Fax Number _____

Email Address _____ Buyer _____

P.O. Number _____ Physician/Therapist _____

Ship To

Name _____

Address _____

City _____ State/Zip Code _____

Phone Number _____



- Maximum load: 275 lbs / 308 lbs
- Seat width: 14 – 22"
- Seat depth: 14 – 21"
- Front seat height: 16.5 – 20.5"
- Back seat height: 11.8 – 19.7"
- Back height: 12 – 20"
- Product weight in basic configuration: approx. 29 lbs
Includes side panels, footrest and rear wheels

Motus Folding Manual Wheelchair				
Maximum Weight Capacity 275 lbs / 308 lbs.				
480F61=00000	[]	K0005	Motus VR (swing-away leg rests)	\$1,995
480F61=00000	[]	K0005	Motus T (fixed front frame)	\$1,995

Seat Width				
	[]		14" (35.5 cm)	NC
	[]		15" (38 cm)	NC
	[]		16" (40.5 cm)	NC
	[]		17" (43 cm)	NC
	[]		18" (45.5 cm)	NC
	[]		19" (48 cm)	NC
MP01	[]	E2201	20" (50.5 cm) max. wt. cap. 308 lbs.	\$375
MP01	[]	E2201	21" (53 cm) max. wt. cap. 308 lbs.	\$375
MP01	[]	E2201	22" (55.5 cm) max. wt. cap. 308 lbs.	\$375

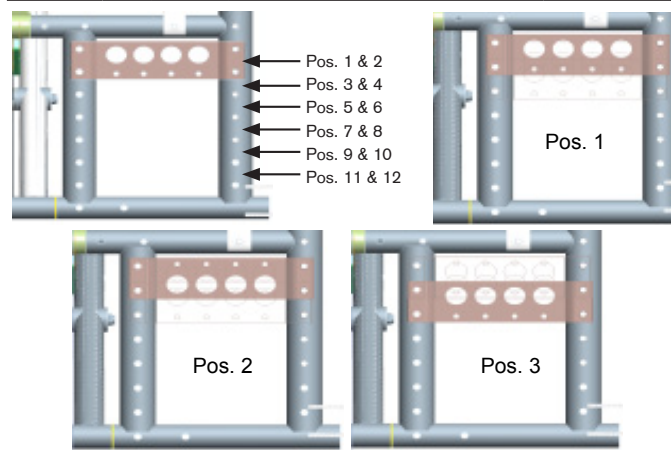
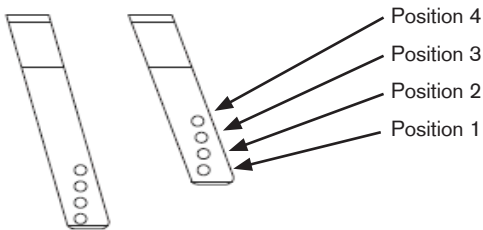
Seat Depth				
	[]		14.2" (36 cm)	NC
	[]		15.0" (38 cm)	NC
	[]		15.7" (40 cm)	NC
	[]		16.5" (42 cm)	NC
	[]		17.3" (44 cm)	NC
	[]		18.1" (46 cm)	NC
	[]		18.9" (48 cm)	NC
	[]		19.7" (50 cm)	NC
MP02	[]	E2203	20.5" (52 cm)	\$475
MP02	[]	E2203	21.3" (54 cm)	\$475

Front Seat Height

		Diameter of Caster Wheel					
		3"	4"	5"	5.5"	6"	7"
Short Caster Fork	Position 4	-	-	-	-	-	-
	Position 3	-	16.5"	-	-	-	-
	Position 2	16.5"	17.0"	17.5"	18.0"	18.0"	-
	Position 1	17.0"	17.5"	18.0"	18.5"	18.5"	19.0"
Tall Caster Fork	Position 4	-	-	18.0"	18.5"	18.5"	19.0"
	Position 3	-	18.0"	18.5"	19.0"	19.0"	19.5"
	Position 2	18.0"	18.5"	19.0"	19.5"	19.5"	20.0"
	Position 1	18.5"	19.0"	19.5"	20.0"	20.0"	20.5"

* variance of +/- 1.4" when used with seat height adapter

The values indicated are rounded values which have been theoretically determined. Maximum deviation is 1/2". The seat height is dependent on the wheel size, caster fork, and mounting position. Please refer to the seat height chart. When using the adapter for large front seat height, 1.5" to all values. Values are specified at 0° seat angle, without a seat cushion.



Rear wheel adapter can be turned 180°

	22"	24"
Position 1	14.0"	15.0"
Position 2	14.5"	15.5"
Position 3	15.0"	16.0"
Position 4	15.5"	16.5"
Position 5	16.0"	17.0"
Position 6	16.5"	17.5"
Position 7	17.0"	18.0"
Position 8	17.5"	18.5"
Position 9	18.0"	19.0"
Position 10	18.5"	19.5"
Position 11	19.0"	20.0"
Position 12	19.5"	20.5"

Front Seat Height				
[]	K0056	16.5" (42 cm)		NC
[]		17.0" (43 cm)		NC
[]		17.5" (45 cm)		NC
[]		18.0" (46 cm)		NC
[]		18.5" (47 cm)		NC
[]		19.0" (48 cm)		NC
[]		19.5" (50 cm)		NC
[]		20.0" (51 cm)		NC
[]		20.5" (52 cm)		NC

Frame Accessories				
MA50	[]		Travel wheels	\$156
MA55	[]	E0971	Anti tippers (pair)	\$142
MA57	[]	E2207	Crutch holder left	\$68
MA58	[]	E2207	Crutch holder right	\$68

Rear Seat Height				
[]	[]		15.0" (38 cm)	NC
[]	[]		15.5" (40 cm)	NC
[]	[]		16.0" (41 cm)	NC
[]	[]		16.5" (42 cm)	NC
[]	[]		17.0" (43 cm)	NC
[]	[]		17.5" (45 cm)	NC
[]	[]		18.0" (46 cm)	NC
[]	[]		18.5" (47 cm)	NC
[]	[]		19.0" (48 cm)	NC
[]	[]		19.5" (50 cm)	NC
[]	[]		20.0" (51 cm)	NC
[]	[]		20.5" (52 cm)	NC

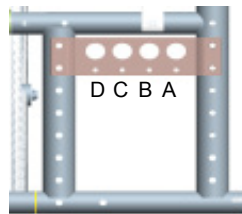
Casters				
MF01	[]		3" Micro, Skater roll	NC
MF02	[]		4" Polyurethane	NC
MX02	[]		4" Aluminum, Polyurethane	\$150
MF03	[]		5" Polyurethane	NC
MX02	[]		5" Aluminum, Polyurethane	\$150
MF05	[]		6" Pneumatic	\$78
MF06	[]		6" Polyurethane	NC
MF07	[]		7" Pneumatic	\$88
MF08	[]		7" Polyurethane	NC

Caster Forks				
MF80	[]		Tall fork	NC
MF81	[]		Short fork	NC
MX30	[]	E1015	Froglegs	\$325

Seat Height Adaptors				
MF96	[]		Front seat height adaptor, short (-1.4" / - 3.5cm)	\$80
MF97	[]		Front seat height adaptor, tall (+1.4" / +3.5cm)	\$80

Rear wheel size				
MG01	[]		22"	NC
MG02	[]		24"	NC

Rear Wheel Camber				
	[]		0°	NC
	[]		2.5°	NC



Rear Wheel Axle Position				
	[]		Position A	NC
	[]		Position B	NC
	[]		Position C	NC
	[]		Position D	NC

Rear Wheel Rim				
MX20	[]		Mag Wheel	NC
MG06	[]		Spoke, hollow rim	NC
MG10	[]		Spinergy SPOX	\$699
MG83	[]	E0958	One arm drive [] Left [] Right	\$893

Rear Wheel Tires				
MX10	[]		1 3/8" Pneumatic	NC
MX12	[]	E2213	1 3/8" Pneumatic w/insert	\$69
1G31	[]		1" Schwalbe RightRun High pressure	\$99
MG35	[]		1 3/8" Polyurethane	NC

Handrim				
MG52	[]		Aluminum anodized, high	NC
MX25	[]		Plastic	\$89
MX26	[]	E0967	Projection	\$199
MX27	[]		Natural Fit - Regular Grip	\$299
MX28	[]		Natural Fit - Super Grip	\$345
MG69	[]		Omit handrim	NC

Rear Wheel Accessories				
MG86	[]	E0959	Amputee adaptor	\$169

Wheel locks				
MH01	[]		Push to lock wheel lock	NC
MH11	[]		Pull to lock wheel lock	NC
MH08	[]		Single sided wheel lock (hemiplegic), right	\$210
MH09	[]		Single sided wheel lock (hemiplegic), left	\$210
MH99	[]		Omit wheel lock	NC

Wheel Lock Accessories				
MH10	[]	E0961	Plug-on, wheel lock extension levers (pair)	\$58

Back Height				
	[]		11.8" (30 cm)	NC
	[]		12.8" (32.5 cm)	NC
	[]		13.8" (35 cm)	NC
	[]		14.8" (37.5 cm)	NC
	[]		15.7" (40 cm)	NC
	[]		16.7" (42.5 cm)	NC
	[]		16.9" (43 cm)	NC
	[]		17.7" (45 cm)	NC
	[]		18.7" (47.5 cm)	NC
	[]		18.9" (48 cm)	NC
	[]		19.7" (50 cm)	NC

Back Options				
MD01			Straight back	NC
			Width adjustment range:	NC
	[]		A) 11.8 - 15.7" (30 - 40cm)	NC
	[]		B) 13.8 - 17.7" (35 - 45 cm)	NC
	[]		C) 15.7 - 19.7" (40 - 50cm)	NC
MD09	[]		Back with 8° thoracic bend	\$26
MD10	[]		Back angle adjustment, 30°	\$231

Back Upholstery				
MD04	[]		Standard	NC
MD05	[]	E2611	Adjustable Tension, adaptable	\$278
MD06	[]		Omit	NC

Push Handle Options			
MD50	[]		Standard push handles \$26
MD51	[]		Standard, long NC
MD56	[]		Flip down push handles, for seat widths up to 19" \$175
MD59	[]		Omit push handles NC

Back Accessory			
ME25	[]		Stabilization Bar Only for 20"-22" seat widths and long push handles \$126

Side Panels and Armrests			
ME01	[]		Side panel, adjustable w/ neoprene liner (protects against cold) \$126
ME11	[]	E0973	Side panel, plug in, T-style, height adj, detachable \$242
ME05	[]	E0973	Side panel, flip back w/ desk (short) length arm pads \$247
ME06	[]	E0973	Side panel, flip back w/ full (long) length arm pads \$247
ME50	[]	E0973	Armrests, tubular, height adjustable, flip back, detachable NC
ME99	[]		Omit NC

Armrest Accessory			
ME60	[]	E0950	Tray \$210

Seat Upholstery			
MC13	[]		Standard upholstery (Non-padded w/Velcro) NC
MC14	[]		Tension adjustable upholstery \$132

Seat Cushion			
MC01	[]		Standard cushion (5cm) \$90
MC06	[]		Omit seat sling -\$15

Footrest			
Lower leg length _____" (adjustment range 13.4 = 20.5" / 34 – 52 cm)			
MB03	[]	K0040	Single panel, angle adjustable, 6.3" / 16 cm deep <i>Motus T only</i> NC
MB10	[]	K0040	Individual footrests, angle adjustable, composite w/ heel loop \$80
MB05	[]	E0990	Individual footrests, non-adjustable, composite w/ heel loop NC
MB25	[]	E0990	Elevating legrest, pair \$268
MB26	[]	E0990	Elevating legrest, right \$140
MB27	[]	E0990	Elevating legrest, left \$140
MB21	[]	E1020	Amputee residual limb support, right \$245
MB22	[]	E1020	Amputee residual limb support, left \$245
MB99	[]		Omit -\$15

Other Accessories			
MZ51	[]	E0978	Lap belt \$63
MZ52	[]		Tool kit \$65

Spoke Protectors			
MG90	[]	K0065	Spoke guard, transparent \$120

Frame color			
002	[]		Anthracite Metallic NC
003	[]		Deep Black NC
014	[]		Candy Red NC
012	[]		Dormant Sky Blue NC
006	[]		Sparkle Blue-Green NC